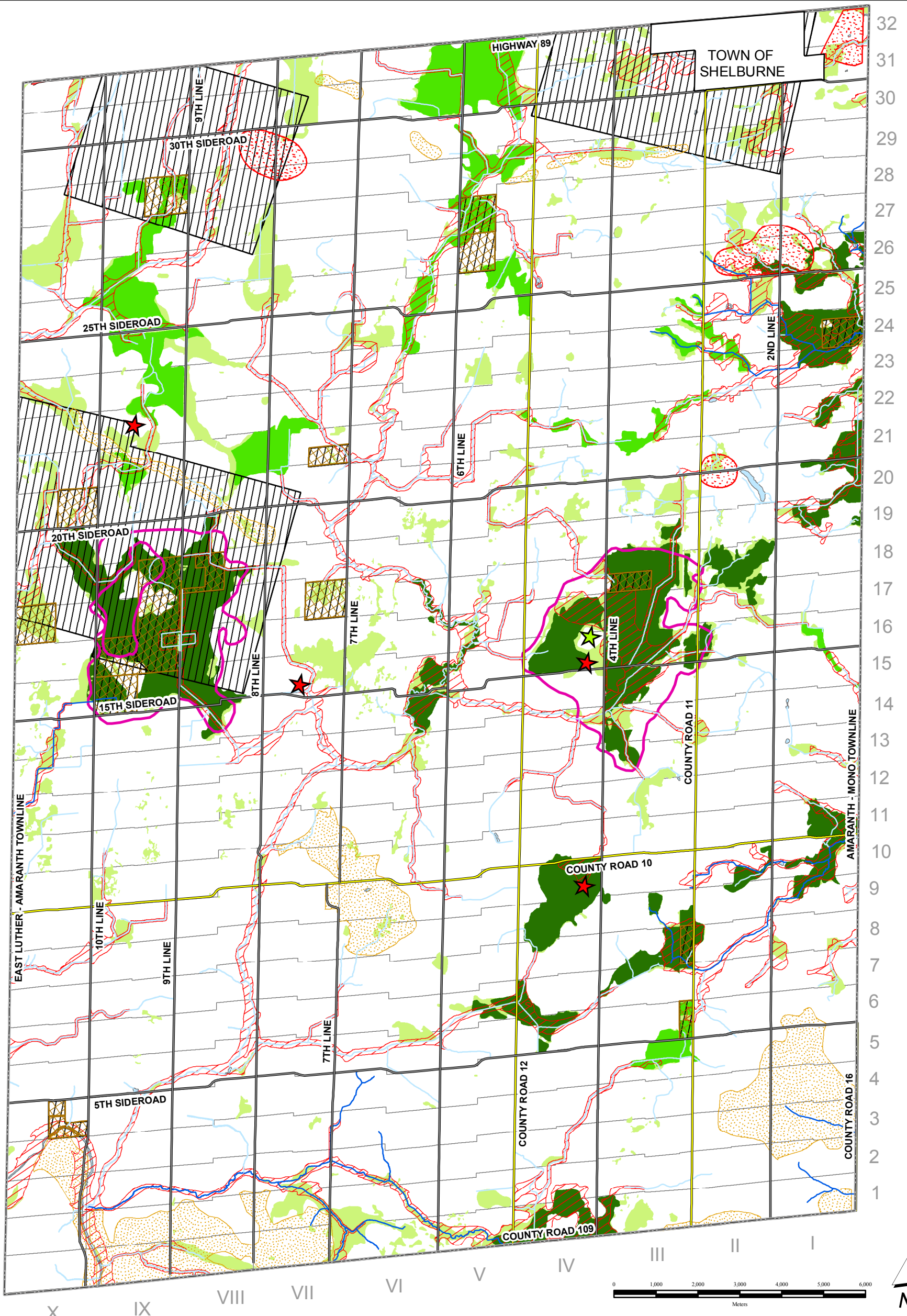


**TOWNSHIP OF AMARANTH OFFICIAL PLAN  
DUFFERIN COUNTY  
SCHEDULE "B" ENVIRONMENTAL FEATURES**



**Legend**

- |                                  |                     |                                    |
|----------------------------------|---------------------|------------------------------------|
| Provincially Significant Wetland | Significant Forest  | High Potential Aggregate Resources |
| Locally Significant Wetland      | Significant Habitat | Vulnerable Aquifer                 |
| Wetland                          | Deer Yard           | Waste Site - Active                |
| Floodplain                       | Water Feature       | Waste Site - Closed                |
|                                  | Coldwater Stream    |                                    |

Township of Amaranth - Official Plan Consolidation  
September 2010

Note: Schedule "B" is revised with respect to the approved Official Plan Amendments (OPA 1 - 3).

Map Projection: NAD 83, UTM Zone 17

This Map is Not A Legal Survey.  
The Township Cannot Be Responsible for Errors, Omissions or Other Inaccuracies.

Lot Fabric Created With Data Provided By Teranet Inc.  
Official Plan Data updated by R.J. Burnside & Associates Ltd.

