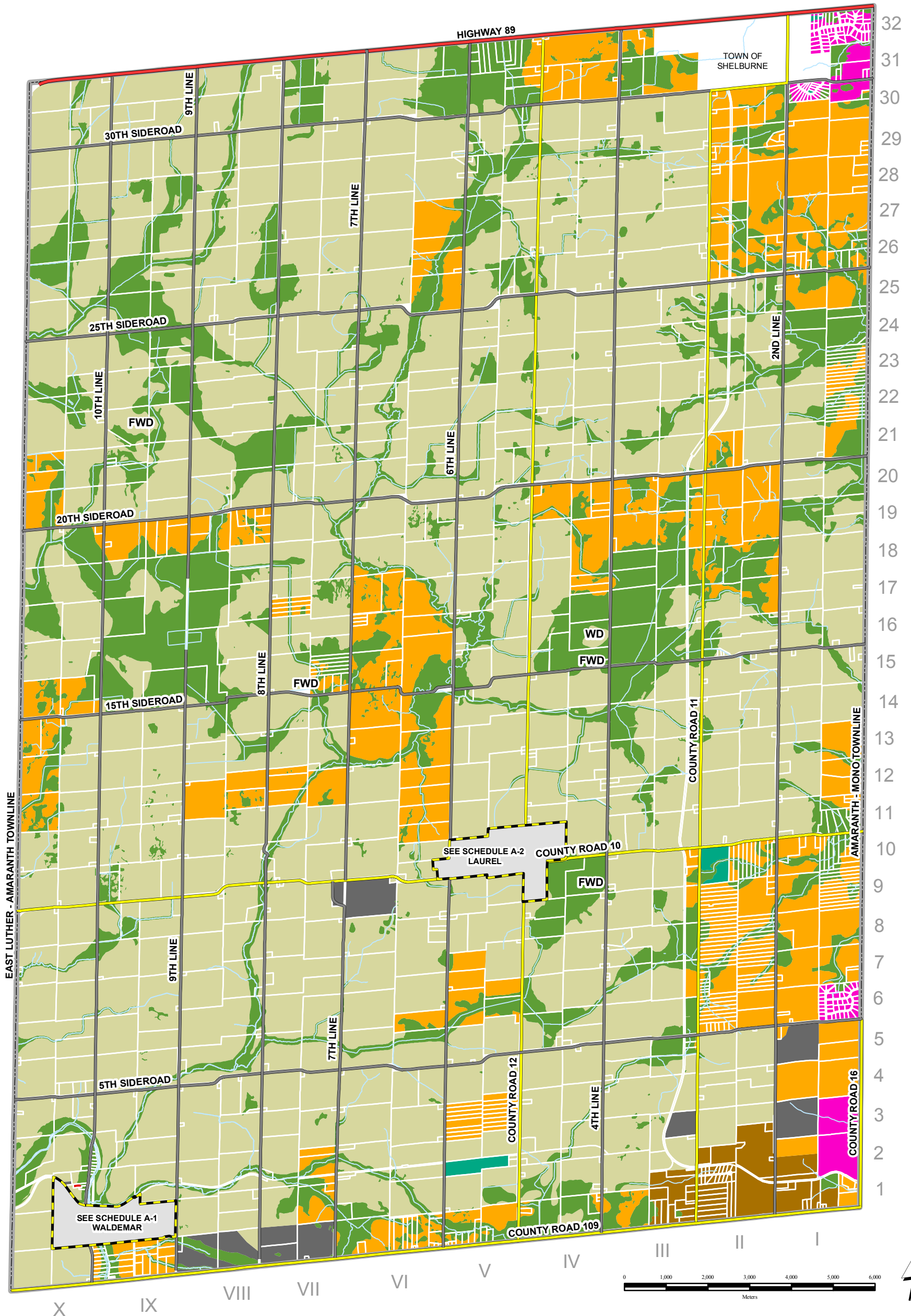


**TOWNSHIP OF AMARANTH OFFICIAL PLAN  
DUFFERIN COUNTY  
SCHEDULE "A" LAND USE & TRANSPORTATION**



**Legend**

- |                                    |                                   |                                       |
|------------------------------------|-----------------------------------|---------------------------------------|
| <b>A</b> Agricultural              | <b>MX</b> Extractive Industrial   | Parcel Boundary                       |
| <b>EP</b> Environmental Protection | <b>RE</b> Open Space / Recreation | Provincial Highway                    |
| <b>RU</b> Rural                    | <b>CR</b> Community Residential   | County Road                           |
| <b>ER</b> Estate Residential       | <b>CI</b> Community Institutional | Municipal Road                        |
| <b>EA</b> Employment Area          | <b>CC</b> Community Commercial    | <b>FWD</b> Former Waste Disposal Site |
|                                    |                                   | <b>WD</b> Waste Disposal Site         |

Township of Amaranth - Official Plan Consolidation  
September 2010

Note: Schedule "A" is revised with respect  
to the approved Official Plan Amendments  
(OPA 1 - 3).

Map Projection: NAD 83, UTM Zone 17

This Map is Not A Legal Survey.  
The Township Cannot Be Responsible for Errors,  
Omissions or Other Inaccuracies.

Lot Fabric Created With Data Provided By Teranet Inc.  
Official Plan Data updated by R.J. Burnside & Associates Ltd.